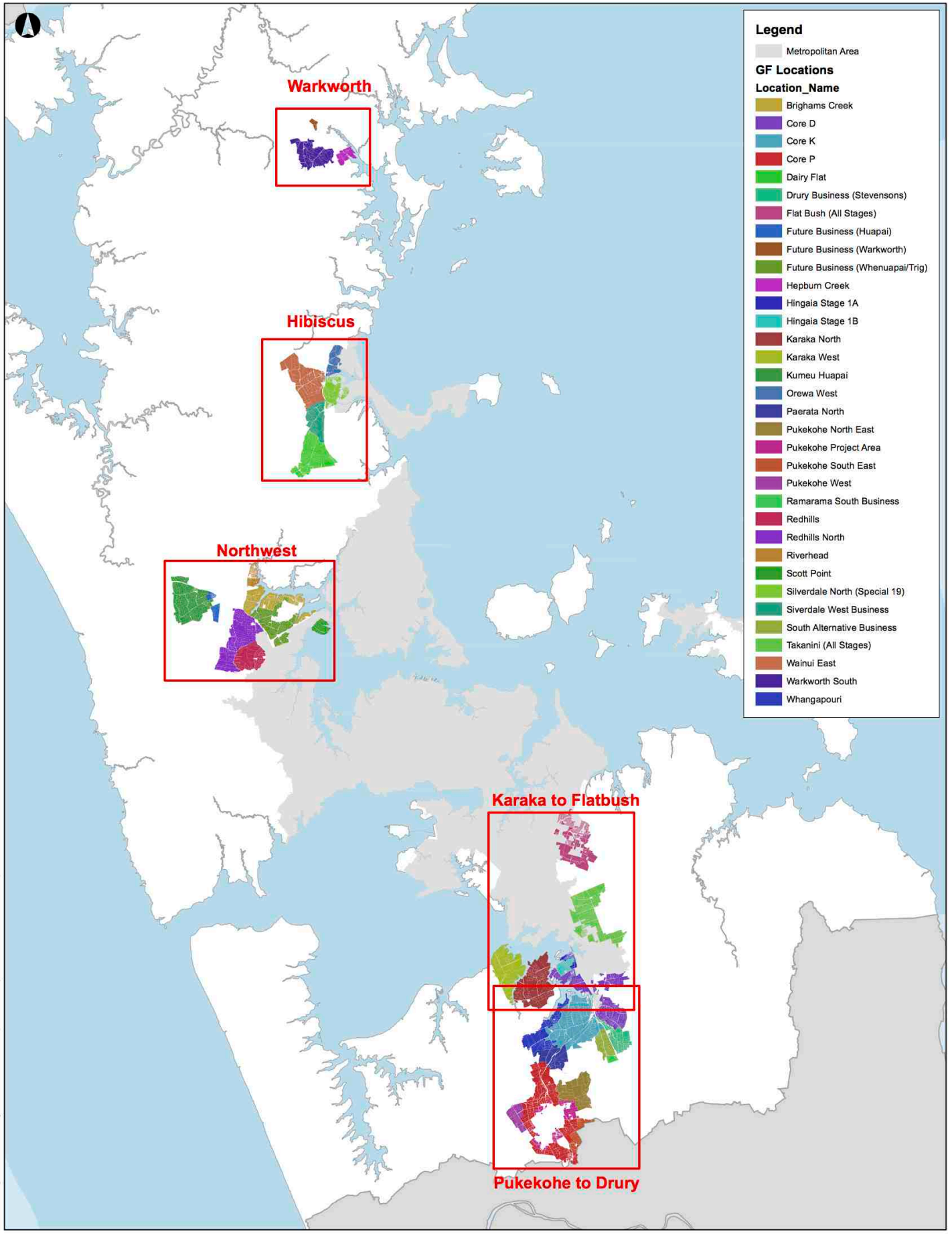


Appendix 5: SD4 / AC GIS Map: Land Area of each Parcel in the RUB Areas

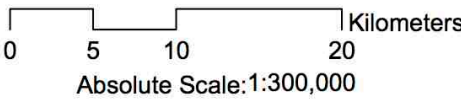


Legend

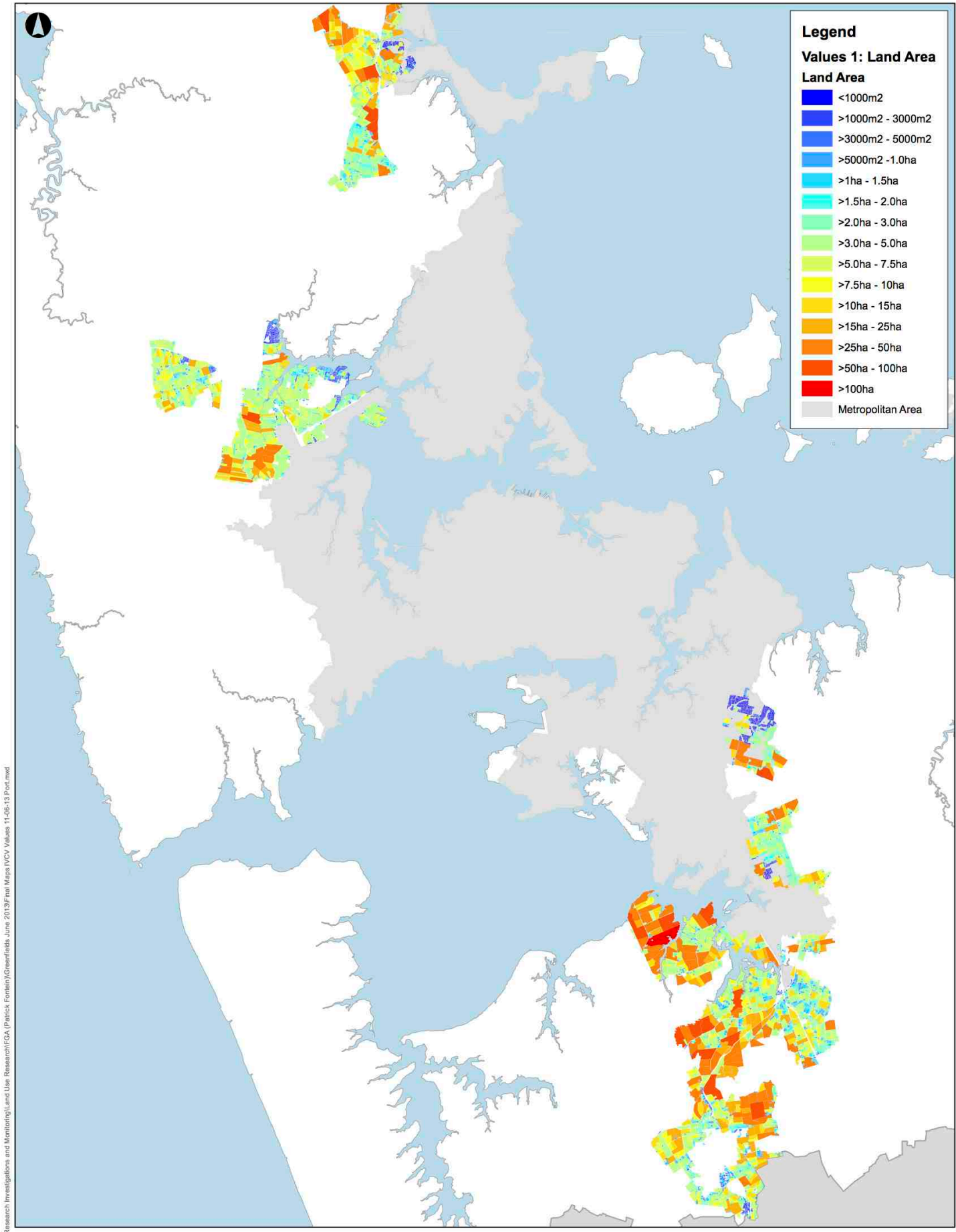
- Metropolitan Area
- GF Locations**
- Location_Name**
- Brighams Creek
- Core D
- Core K
- Core P
- Dairy Flat
- Drury Business (Stevensons)
- Flat Bush (All Stages)
- Future Business (Huapai)
- Future Business (Warkworth)
- Future Business (Whenuapai/Trig)
- Hepburn Creek
- Hingaia Stage 1A
- Hingaia Stage 1B
- Karaka North
- Karaka West
- Kumeu Huapai
- Orewa West
- Paerata North
- Pukekohe North East
- Pukekohe Project Area
- Pukekohe South East
- Pukekohe West
- Ramarama South Business
- Redhills
- Redhills North
- Riverhead
- Scott Point
- Silverdale North (Special 19)
- Silverdale West Business
- South Alternative Business
- Takanini (All Stages)
- Wainui East
- Warkworth South
- Whangapouri

"Project Unlock"
Extent: Region

Study Area Locations



Kyle Balderson 11-6-2013 LICPOASRResearch Investigations and Monitoring(Land Use Research)(FGA (Patrick Fontan)(Greenfields June 2013)(Final Maps (VCV Values 11-06-13 Proj.mxd



Legend

Values 1: Land Area

Land Area

- <1000m²
- >1000m² - 3000m²
- >3000m² - 5000m²
- >5000m² - 1.0ha
- >1ha - 1.5ha
- >1.5ha - 2.0ha
- >2.0ha - 3.0ha
- >3.0ha - 5.0ha
- >5.0ha - 7.5ha
- >7.5ha - 10ha
- >10ha - 15ha
- >15ha - 25ha
- >25ha - 50ha
- >50ha - 100ha
- >100ha
- Metropolitan Area

Kyle Bilderson 11-6-2013 LICPOASRResearch Investigations and Monitoring\Land Use Research\IGA (Patrick Fontbin)\Greenfields June 2013\Final Maps IVCV Values 11-06-13 Port.mxd

"Project Unlock"
 Extent: Region (excl Warkworth)

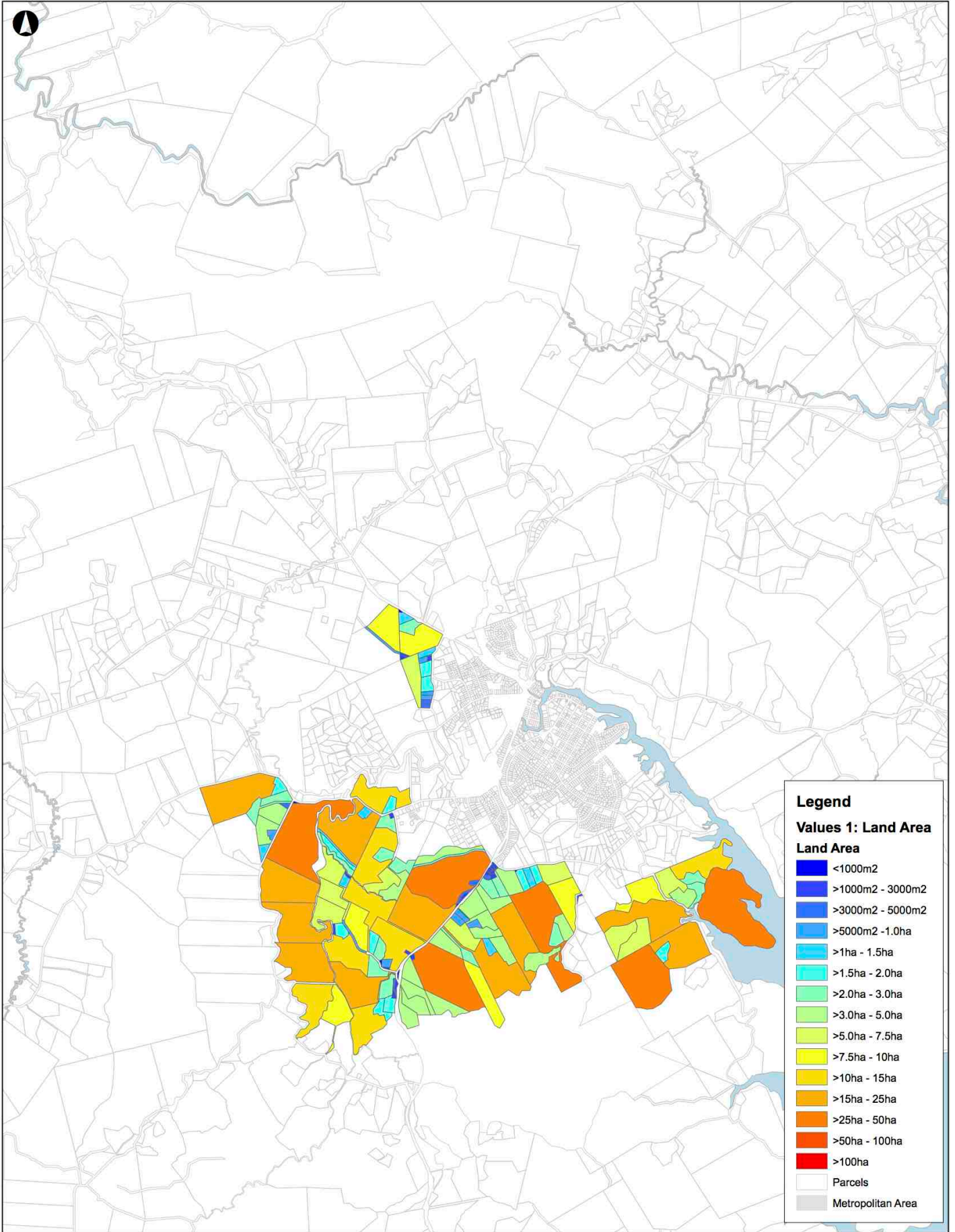
1: Land Area Score

Kilometers
 0.5 2

Absolute Scale: 1:200,000

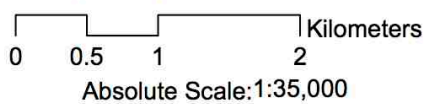


Produced by Research, Investigations & Monitoring



"Project Unlock"
Extent: Warkworth

1: Land Area Score





Legend

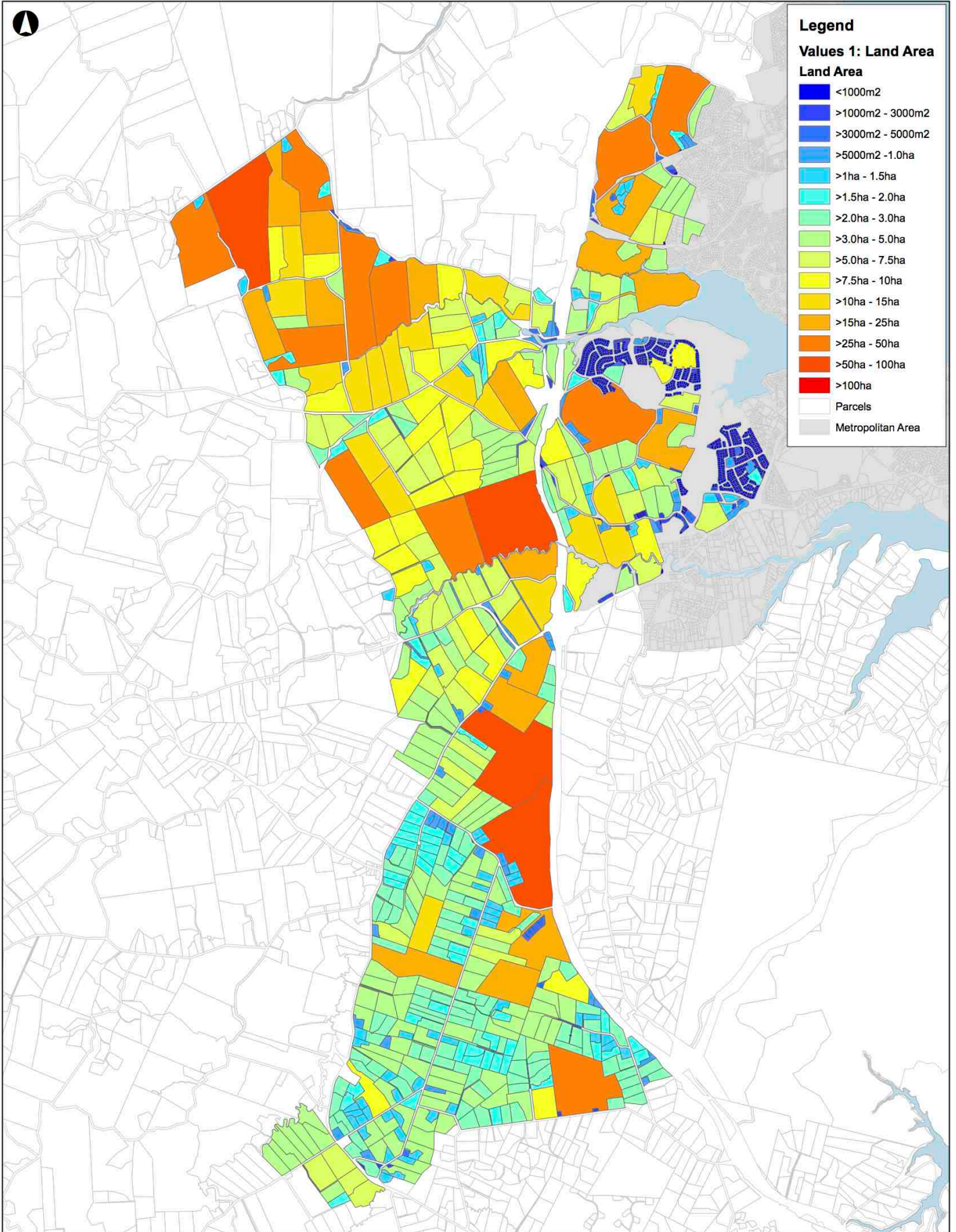
Values 1: Land Area

Land Area

- <1000m2
- >1000m2 - 3000m2
- >3000m2 - 5000m2
- >5000m2 - 1.0ha
- >1ha - 1.5ha
- >1.5ha - 2.0ha
- >2.0ha - 3.0ha
- >3.0ha - 5.0ha
- >5.0ha - 7.5ha
- >7.5ha - 10ha
- >10ha - 15ha
- >15ha - 25ha
- >25ha - 50ha
- >50ha - 100ha
- >100ha

Parcels

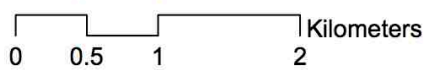
Metropolitan Area



"Project Unlock"

Extent: Hibiscus

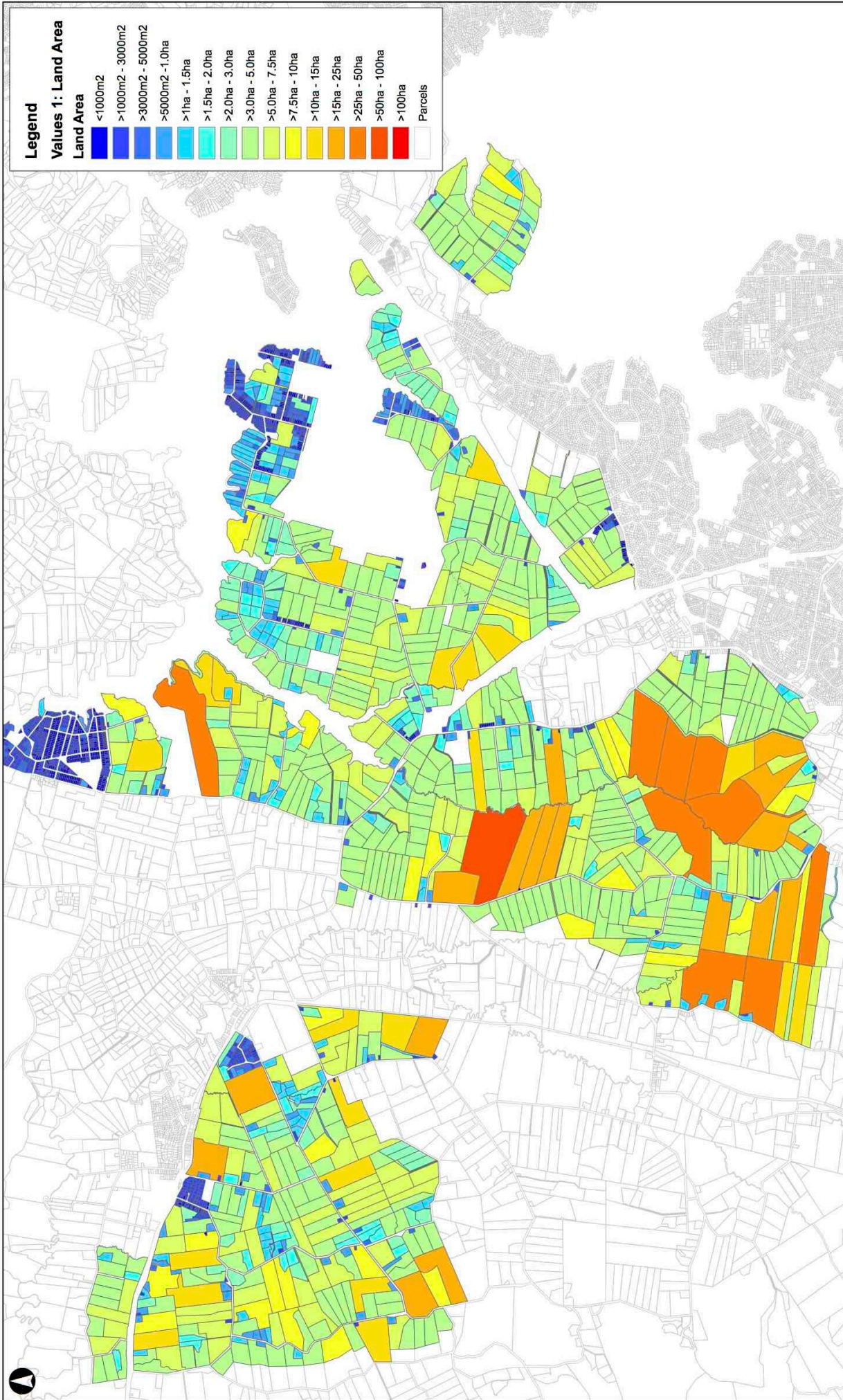
1: Land Area Score



Absolute Scale: 1:35,000



Produced by Research, Investigations & Monitoring



Legend

Values 1: Land Area

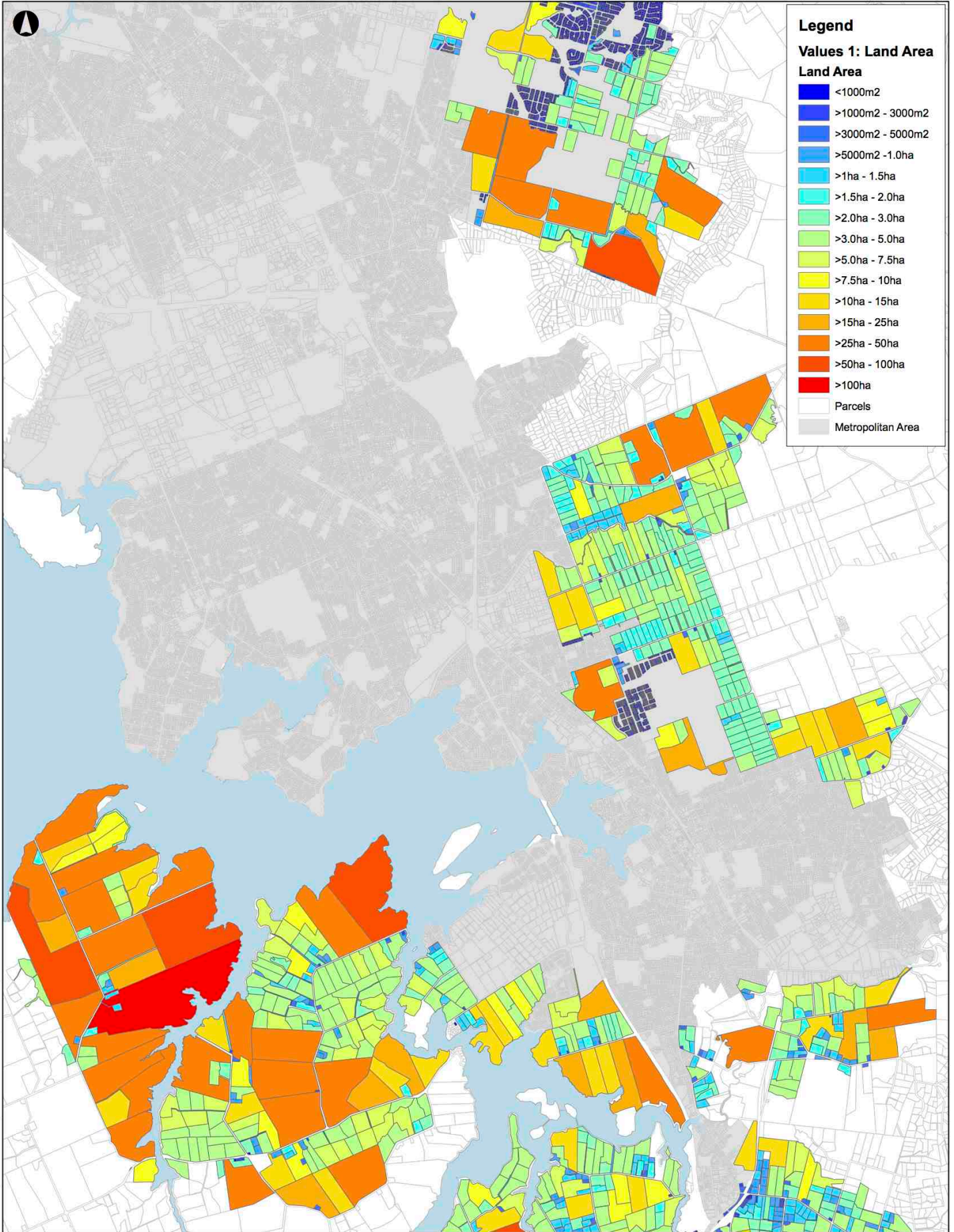
Land Area	Color
<1000m ²	Dark Blue
>1000m ² - 3000m ²	Blue
>3000m ² - 5000m ²	Light Blue
>5000m ² - 1.0ha	Cyan
>1ha - 1.5ha	Teal
>1.5ha - 2.0ha	Green
>2.0ha - 3.0ha	Light Green
>3.0ha - 5.0ha	Yellow-Green
>5.0ha - 7.5ha	Yellow
>7.5ha - 10ha	Orange
>10ha - 15ha	Light Orange
>15ha - 25ha	Orange
>25ha - 50ha	Dark Orange
>50ha - 100ha	Red
>100ha	Dark Red
Parcels	White

"Project Unlock"
Extent: Nor"West

1: Land Area



Produced by Research, Investigations & Monitoring

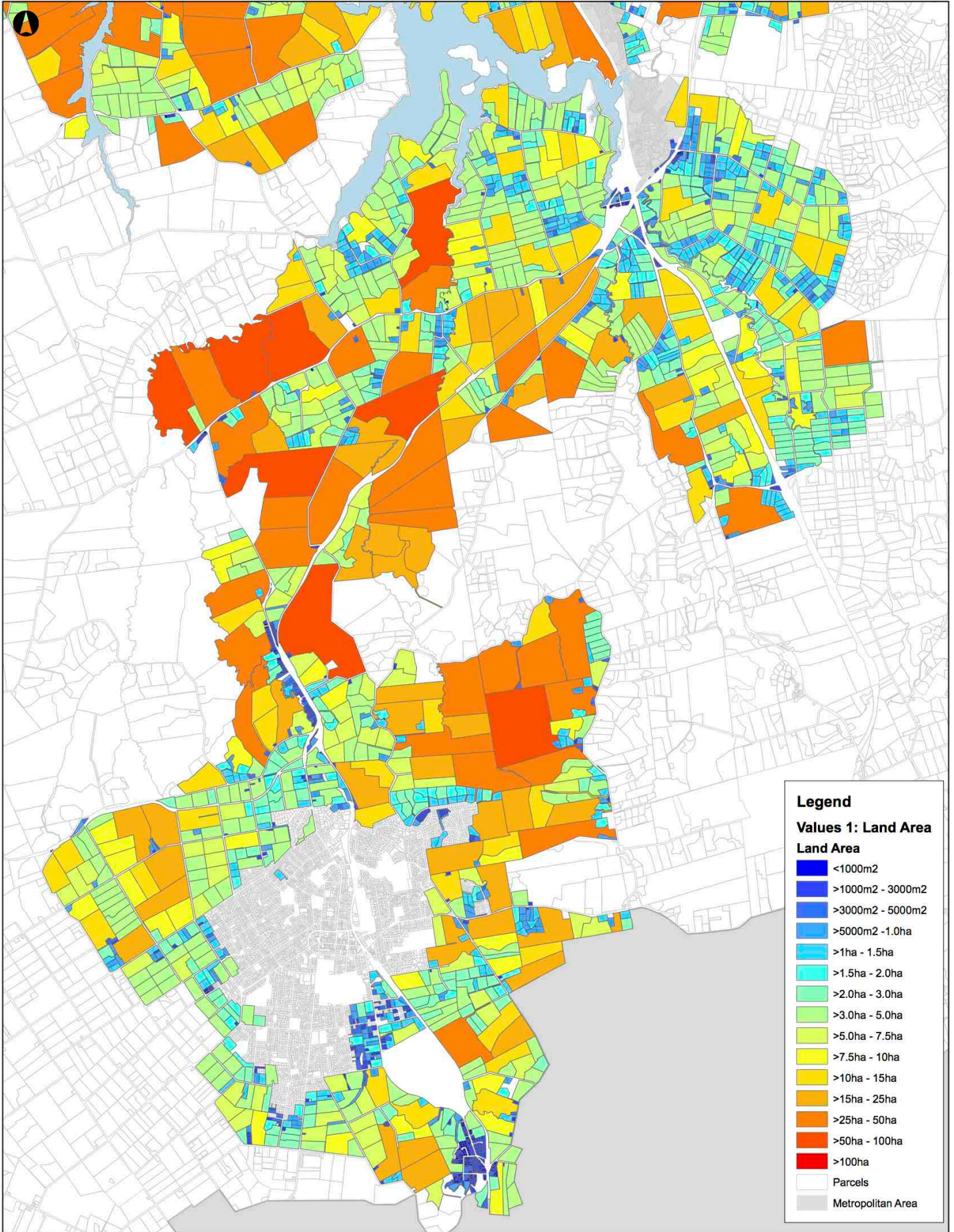


Kyle Balderston 11-6-2013 LICPOASRResearch Investigations and Monitoring/Land Use Research/FSA (Patrick Fontain)/Greenfields June 2013/Final Maps IVCV Values 11-06-13 Port.mxd

"Project Unlock"
Extent: Karaka to Flatbush

1: Land Area Score





"Project Unlock"
Extent: Pukekohe to Drury

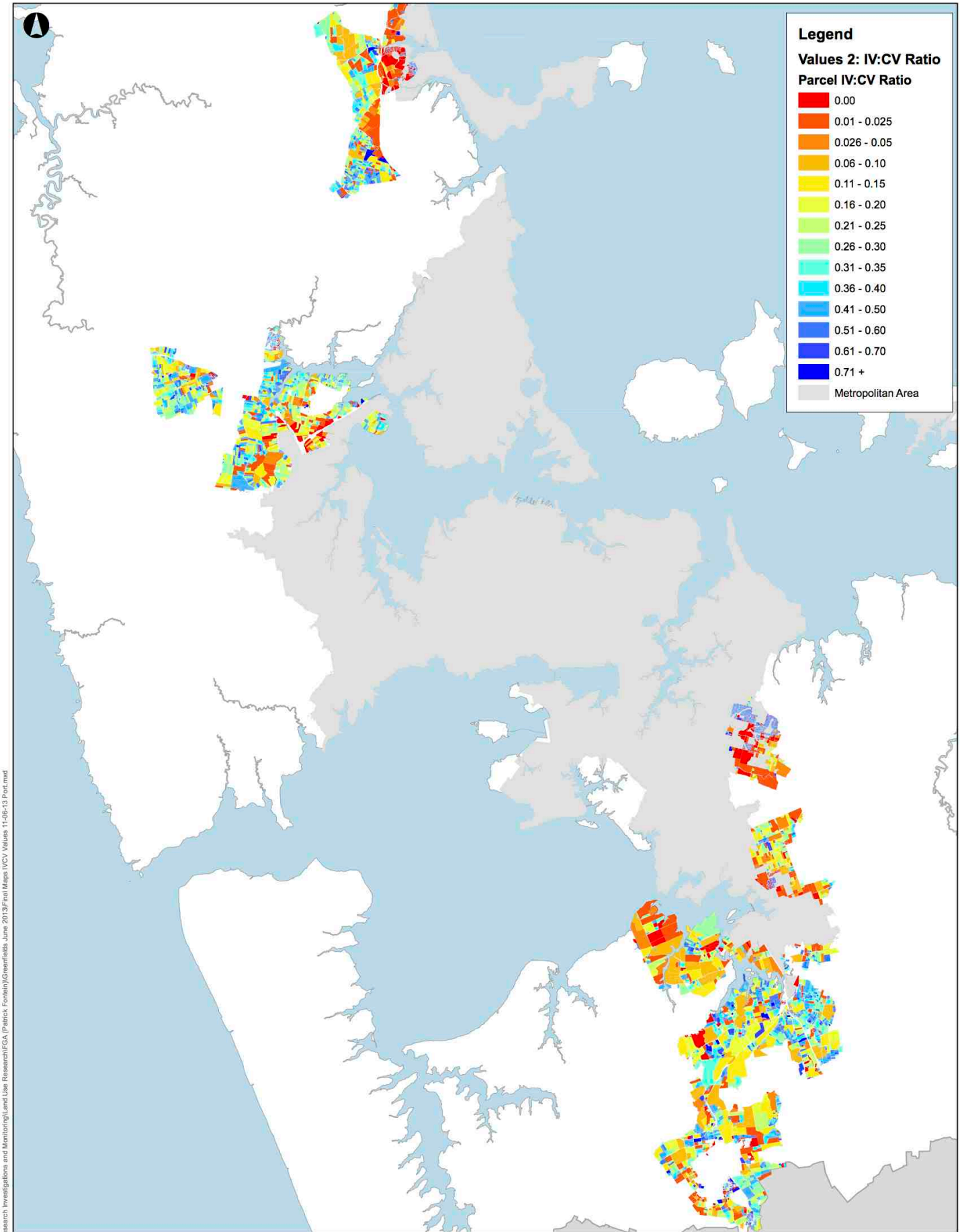
1: Land Area Score



Absolute Scale: 1:45,000



Appendix 6: SD4 / AC GIS Map: The IV / CV Ratio of each Parcel in the RUB Areas



Legend

Values 2: IV:CV Ratio

Parcel IV:CV Ratio

- 0.00
- 0.01 - 0.025
- 0.026 - 0.05
- 0.06 - 0.10
- 0.11 - 0.15
- 0.16 - 0.20
- 0.21 - 0.25
- 0.26 - 0.30
- 0.31 - 0.35
- 0.36 - 0.40
- 0.41 - 0.50
- 0.51 - 0.60
- 0.61 - 0.70
- 0.71 +

Metropolitan Area

Kyle Bakerton 11-6-2013 U:\CPOASR\Research Investigations and Monitoring\Land Use Research\FGA (Patrick Forlani)\Greenfields June 2013\Final Maps IV:CV Values 11-06-13 Post.mxd

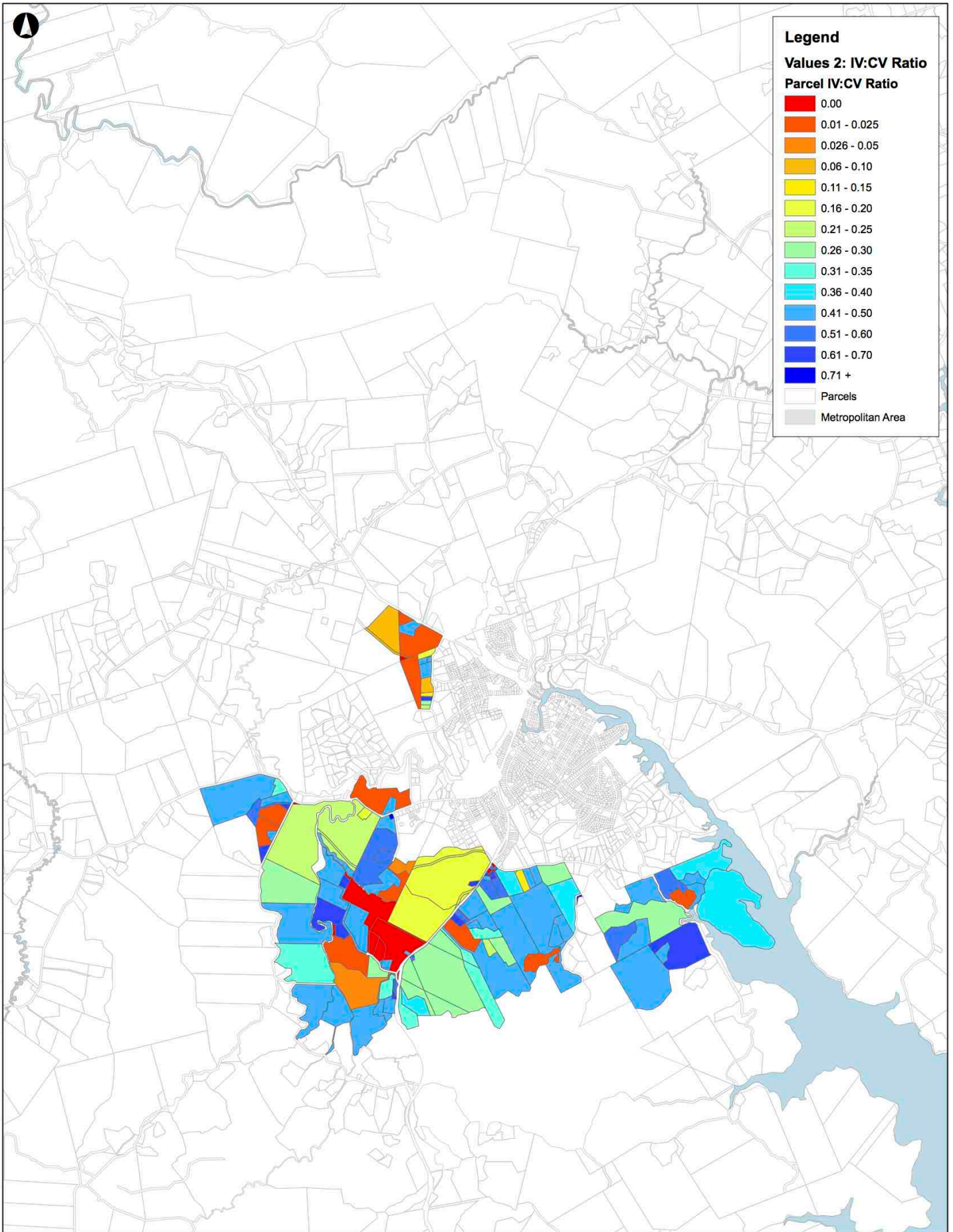
"Project Unlock"
 Extent: Region (excl Warkworth)

2: IV:CV Score

Kilometers
0.5 2

Absolute Scale: 1:200,000





"Project Unlock"
Extent: Warkworth

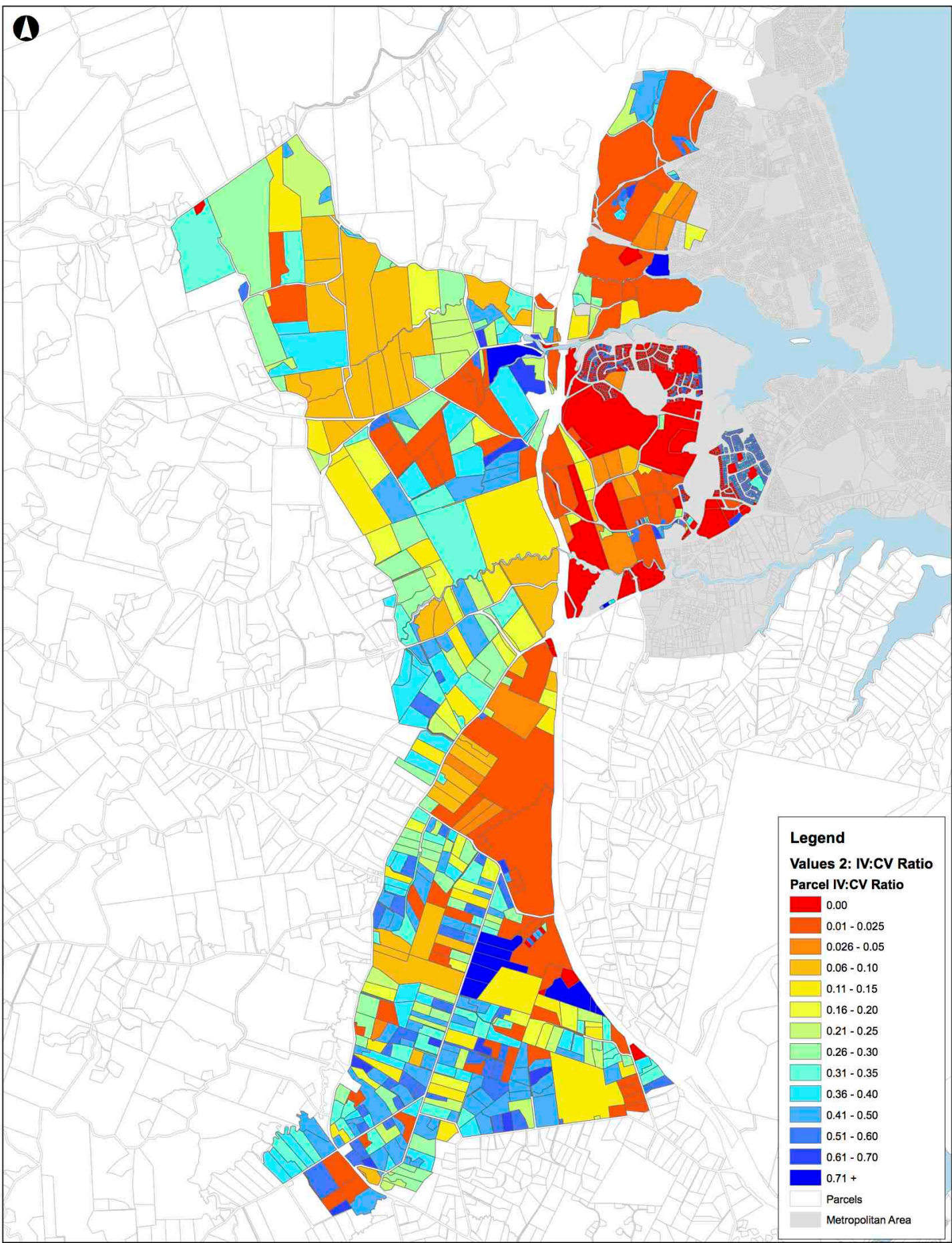
2: IV:CV Score



Absolute Scale: 1:35,000



Produced by Research, Investigations & Monitoring

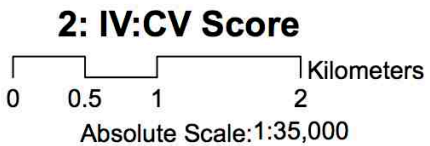


Legend

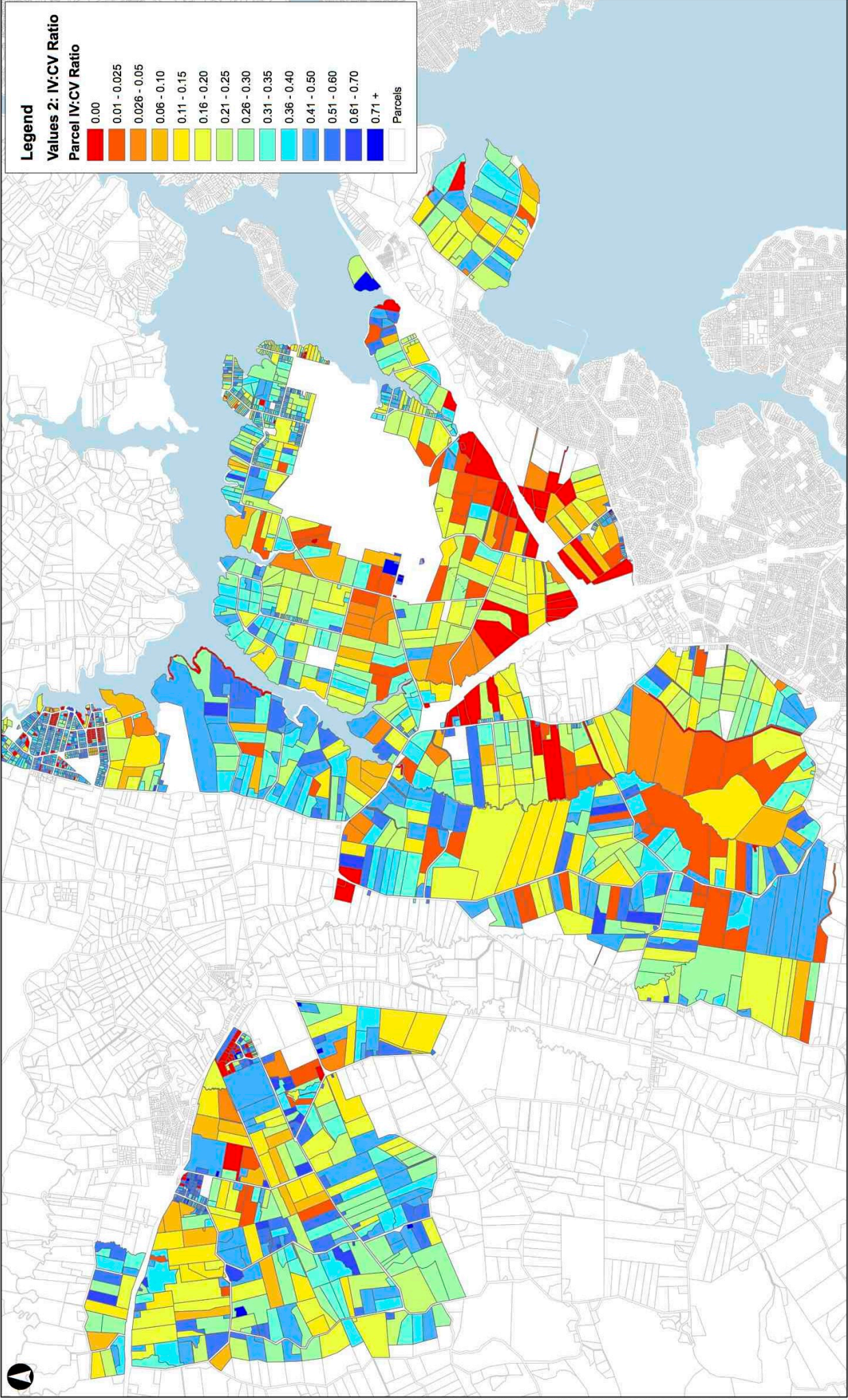
Values 2: IV:CV Ratio
Parcel IV:CV Ratio

- 0.00
- 0.01 - 0.025
- 0.026 - 0.05
- 0.06 - 0.10
- 0.11 - 0.15
- 0.16 - 0.20
- 0.21 - 0.25
- 0.26 - 0.30
- 0.31 - 0.35
- 0.36 - 0.40
- 0.41 - 0.50
- 0.51 - 0.60
- 0.61 - 0.70
- 0.71 +
- Parcels
- Metropolitan Area

"Project Unlock"
Extent: Hibiscus



Kylie Balderson 14-02-2013 LICPOAS\Research Investigations and Monitoring\Land Use Research\ISA (Patrick Foinlin)\Greenfields June 2013\Final Maps IV:CV Values 1-06-13 Port.mxd



"Project Unlock"
Extent: NorWest

2 IV:CV Ratio





Legend

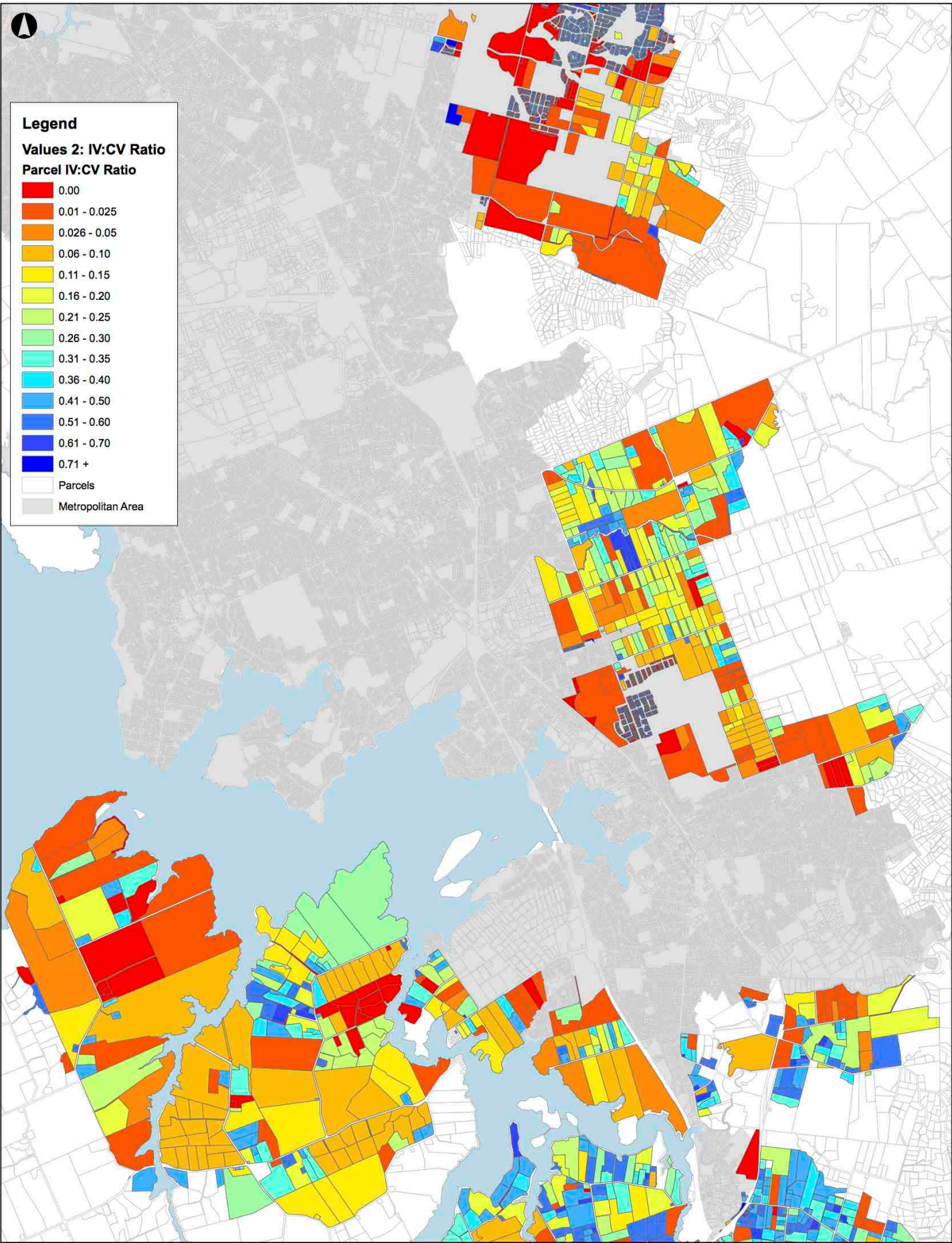
Values 2: IV:CV Ratio

Parcel IV:CV Ratio

- 0.00
- 0.01 - 0.025
- 0.026 - 0.05
- 0.06 - 0.10
- 0.11 - 0.15
- 0.16 - 0.20
- 0.21 - 0.25
- 0.26 - 0.30
- 0.31 - 0.35
- 0.36 - 0.40
- 0.41 - 0.50
- 0.51 - 0.60
- 0.61 - 0.70
- 0.71 +

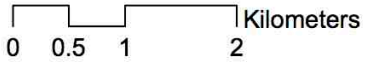
Parcels

Metropolitan Area



"Project Unlock"
 Extent: Karaka to Flatbush

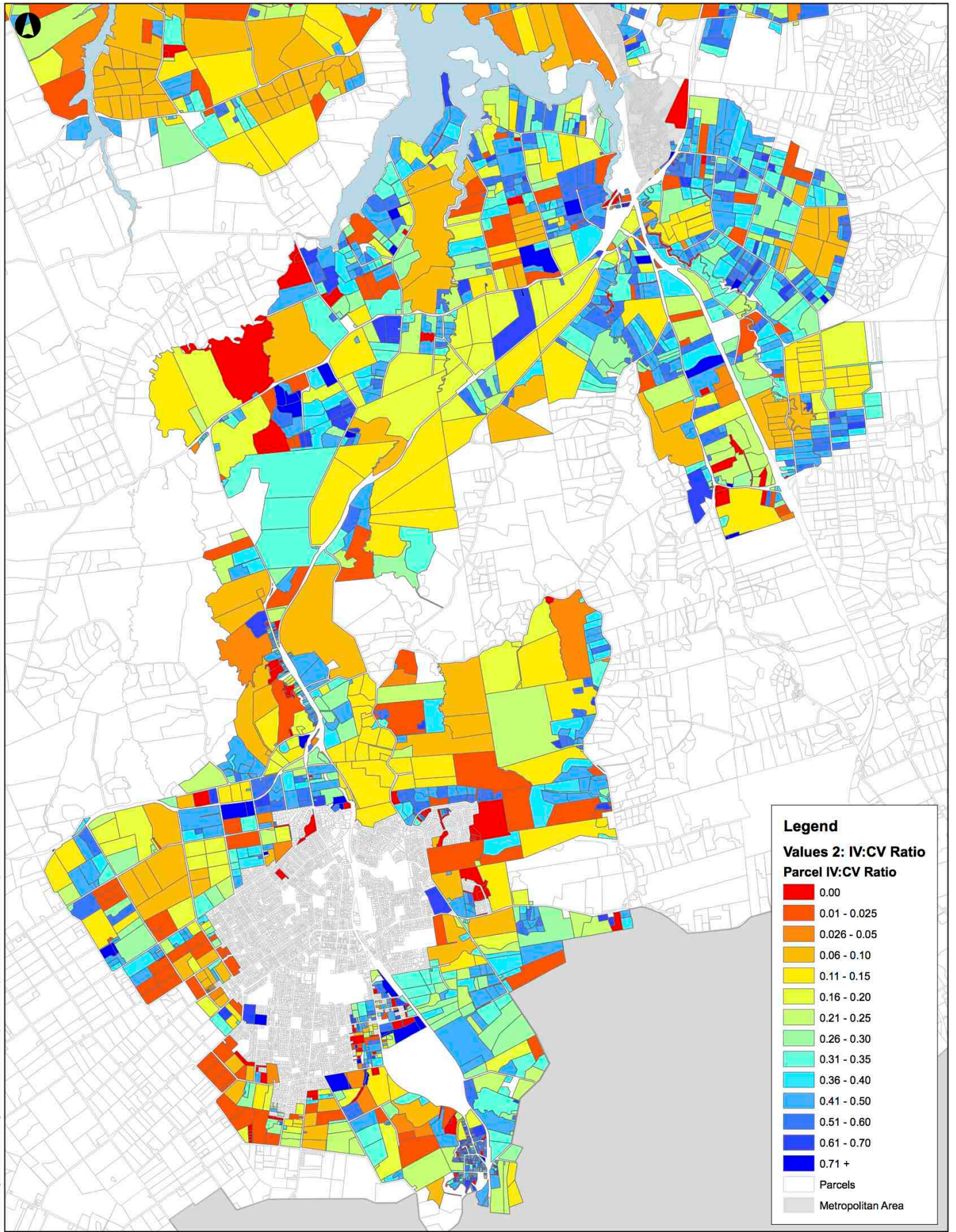
2: IV:CV Score



Absolute Scale: 1:45,000



Kylie Balderson 11-12-2013 U:\CPOAS\Research Investigations and Monitoring\Land Use Research\ESA (Patrick Foinlin)\Greenfields June 2013\Final Maps IV:CV Values 11-06-13 Post.mxd



Legend

Values 2: IV:CV Ratio

Parcel IV:CV Ratio

0.00
0.01 - 0.025
0.026 - 0.05
0.06 - 0.10
0.11 - 0.15
0.16 - 0.20
0.21 - 0.25
0.26 - 0.30
0.31 - 0.35
0.36 - 0.40
0.41 - 0.50
0.51 - 0.60
0.61 - 0.70
0.71 +
Parcels
Metropolitan Area

"Project Unlock"
Extent: Pukekohe to Drury

2: IV:CV Score



Absolute Scale: 1:45,000



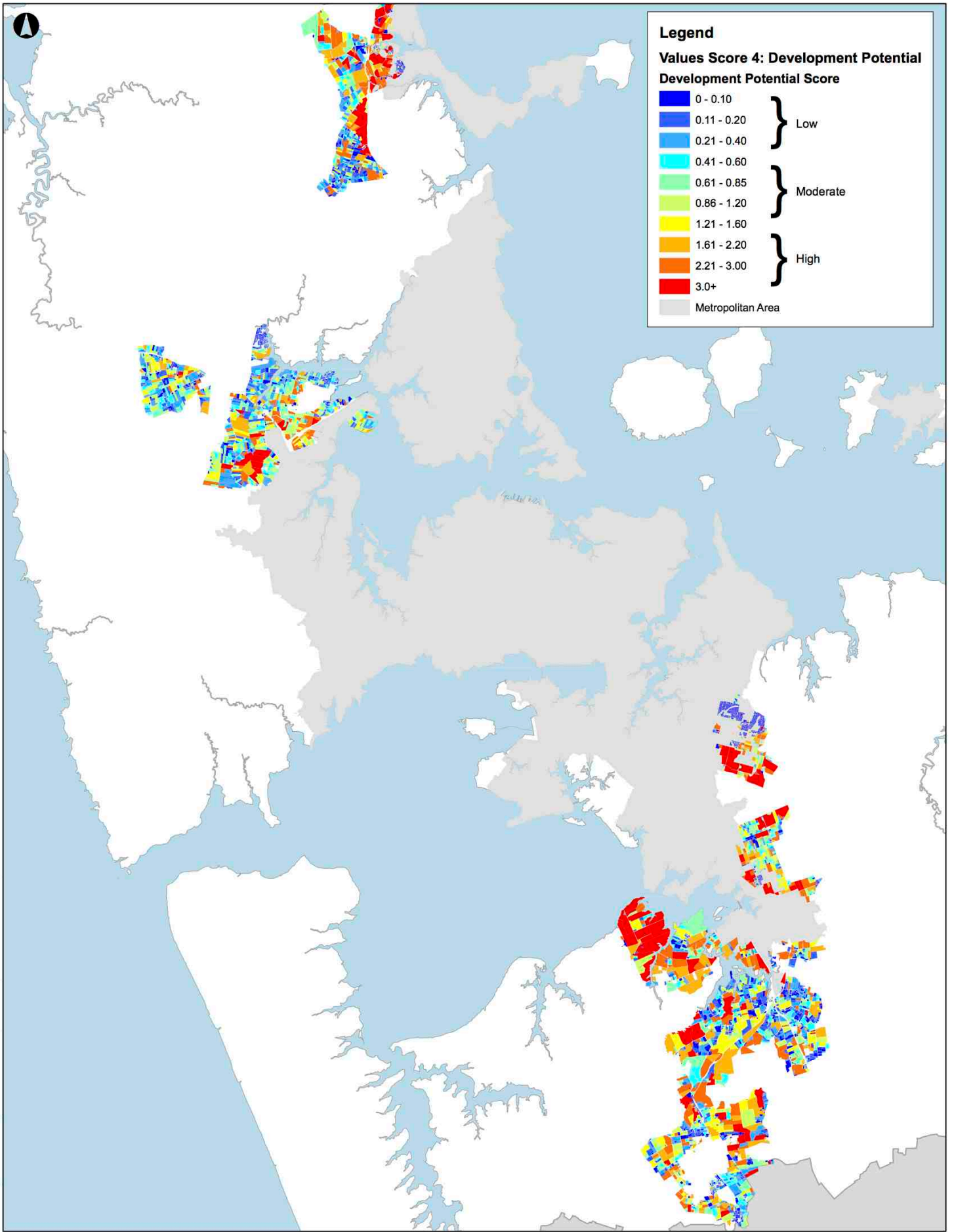
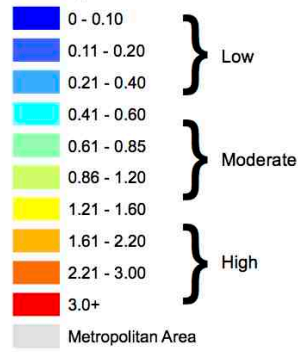
Kyle Balderson 11-12-2013 U:\CPO\ASB\Research Investigations and Monitoring\Land Use Research\ESA (Patrick Foinlin)\Greenfields June 2013\Final Maps IV:CV Values 11-06-13 Post.mxd

Appendix 7: Overall Development Potential of each Parcel in the RUB Areas

Legend

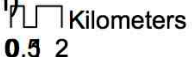
Values Score 4: Development Potential

Development Potential Score



"Project Unlock" 4: Overall Development Potential Score

Extent: Region (excluding Warkworth)



Absolute Scale: 1:200,000

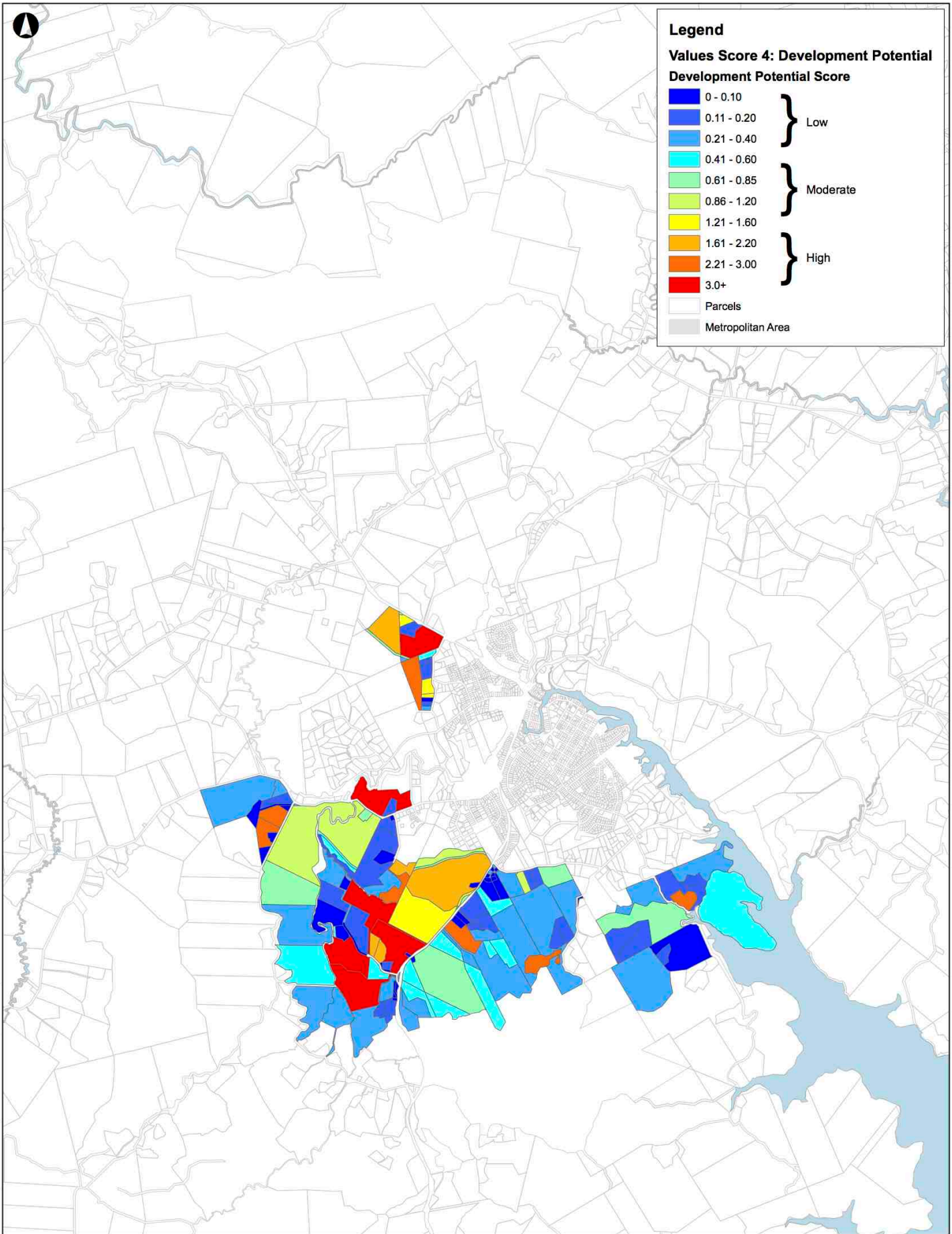
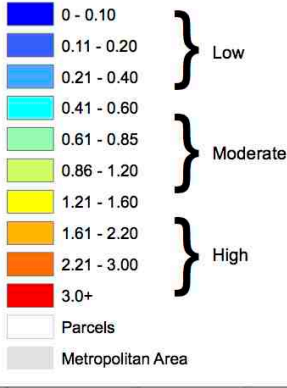


Kyle Balderston 11-02-2013 U:\CPO\ASR\Research Investigations and Monitoring\Land Use Research\FGA (Patrick Fontain)\Greenfields June 2013\Final Maps\VCV Values 11-06-13 Port.mxd

Legend

Values Score 4: Development Potential

Development Potential Score



"Project Unlock"
Extent: Warkworth

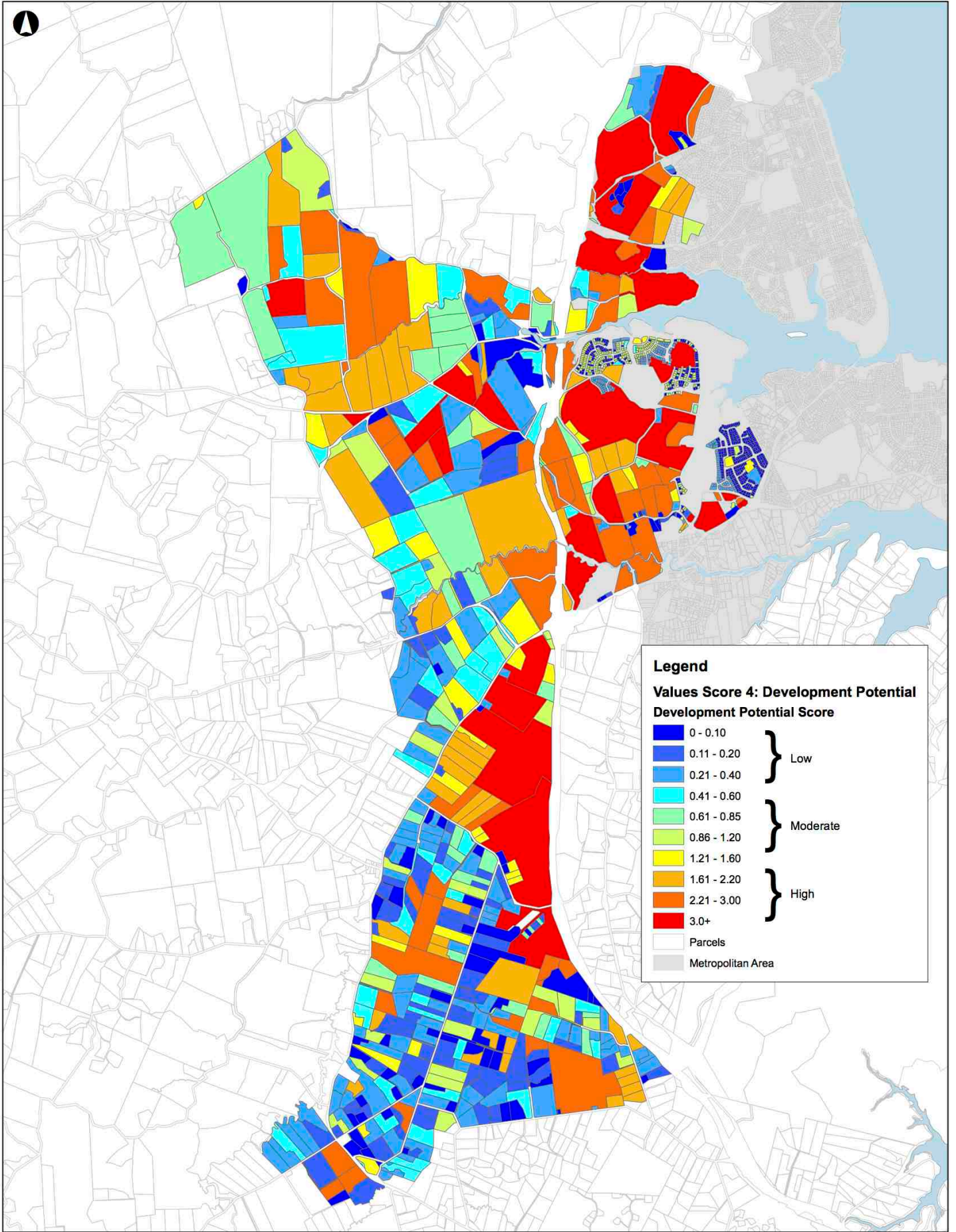
4: Overall Development Potential Score



Absolute Scale: 1:35,000



Kyle Balderton 11-02-2013 U:\CP\OAS\Research Investigations and Monitoring\Land Use Research\IGSA (Patrick Fominin)\Greenfields June 2013\Final Maps IVCV Values 11-06-13 Print.mxd



Legend

Values Score 4: Development Potential

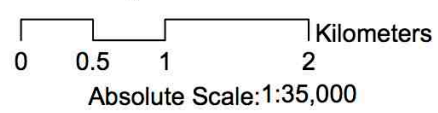
Development Potential Score

0 - 0.10	} Low
0.11 - 0.20	
0.21 - 0.40	
0.41 - 0.60	} Moderate
0.61 - 0.85	
0.86 - 1.20	
1.21 - 1.60	} High
1.61 - 2.20	
2.21 - 3.00	
3.0+	

■ Parcels
 ■ Metropolitan Area

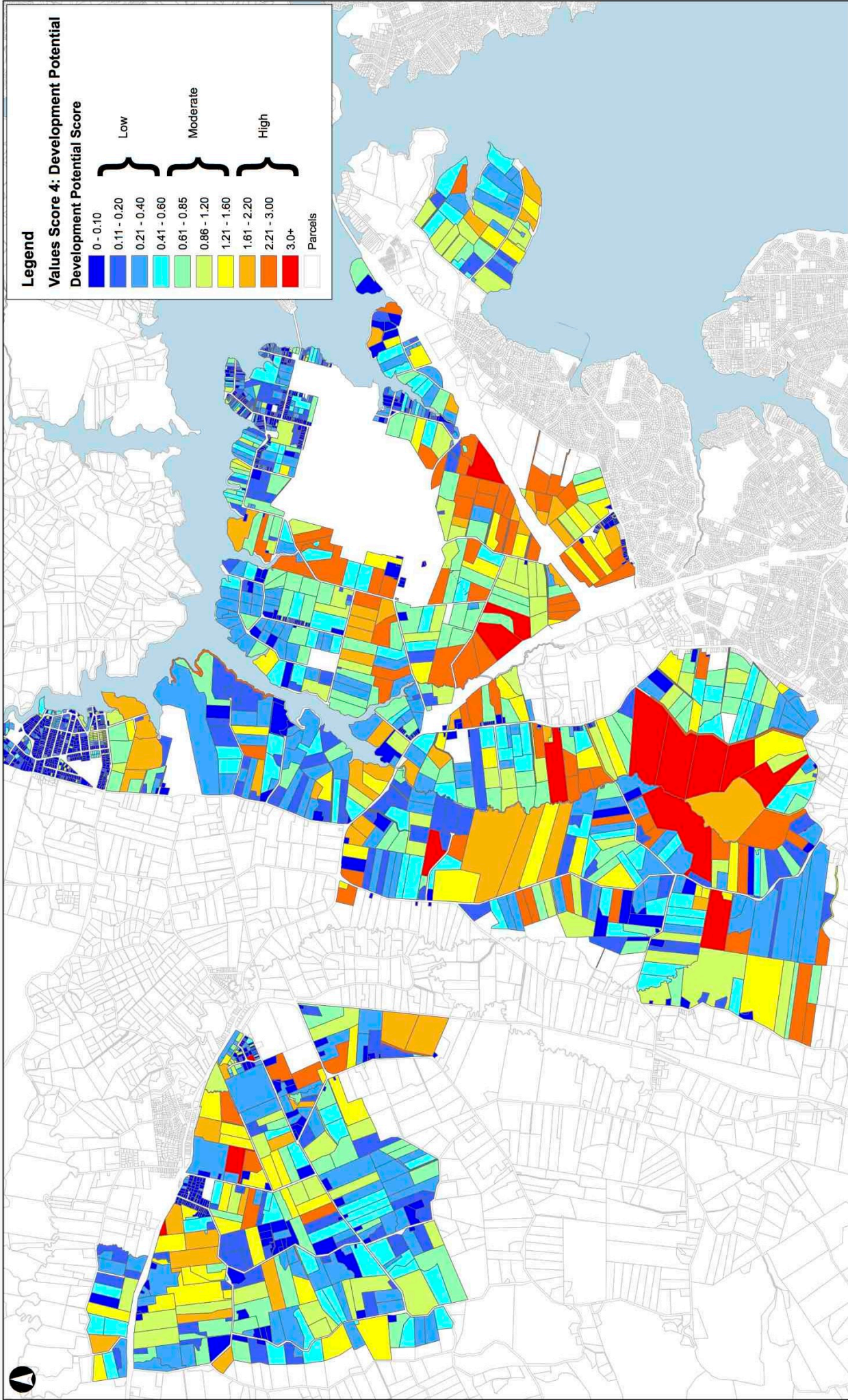
"Project Unlock"
Extent: Hibiscus

4: Overall Development Potential Score



Produced by Research, Investigations & Monitoring

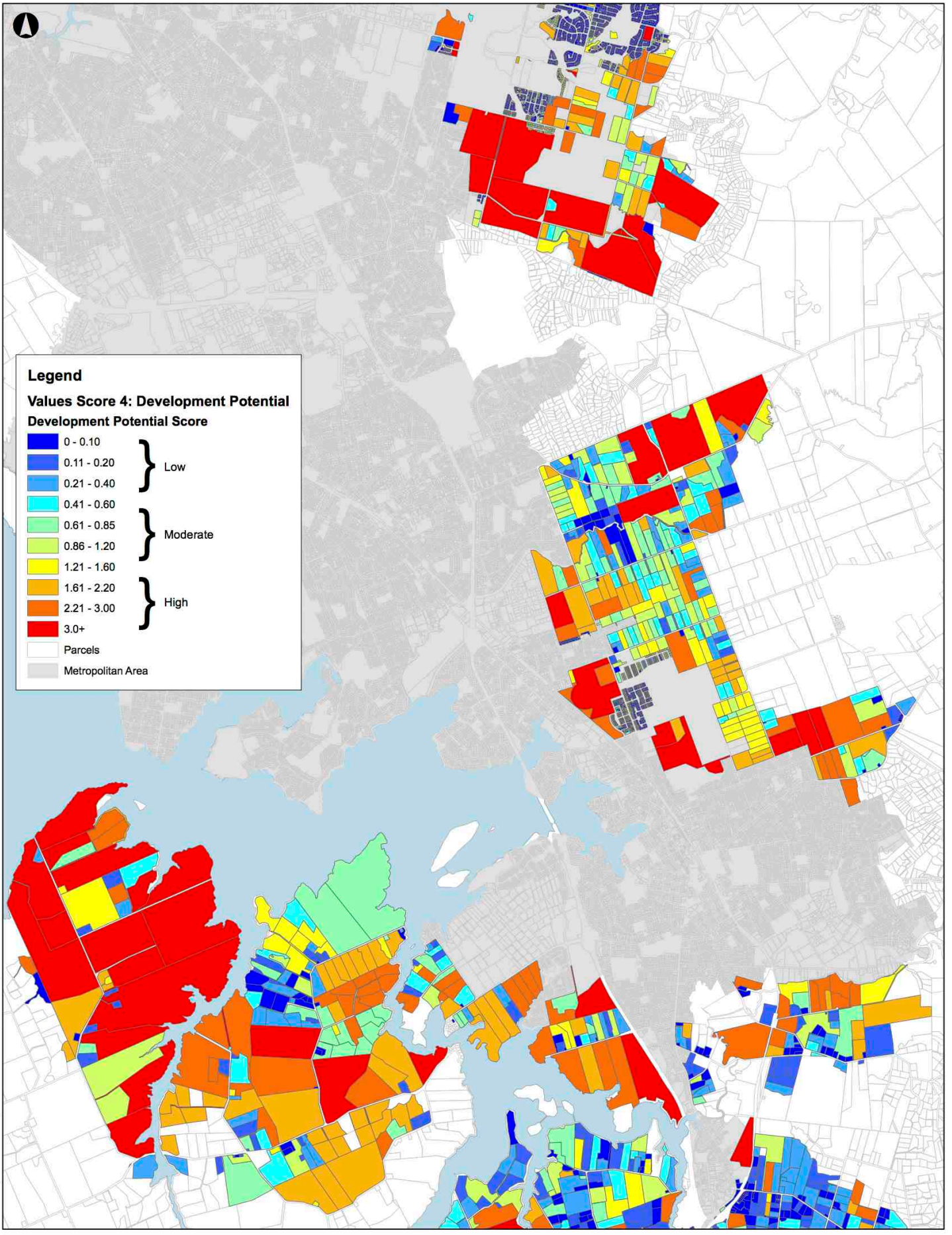
Kylie Ballerston 11-6-2015 U:\CPO\ASR\Research\Investigations and Monitoring\Land Use Research\FGA (Patrick Fomin)\Greenfields June 2013\Final Maps IVCV Values 11-06-13 Port.mxd



"Project Unlock"
Extent: Nor'West

4: Overall Development Potential Score



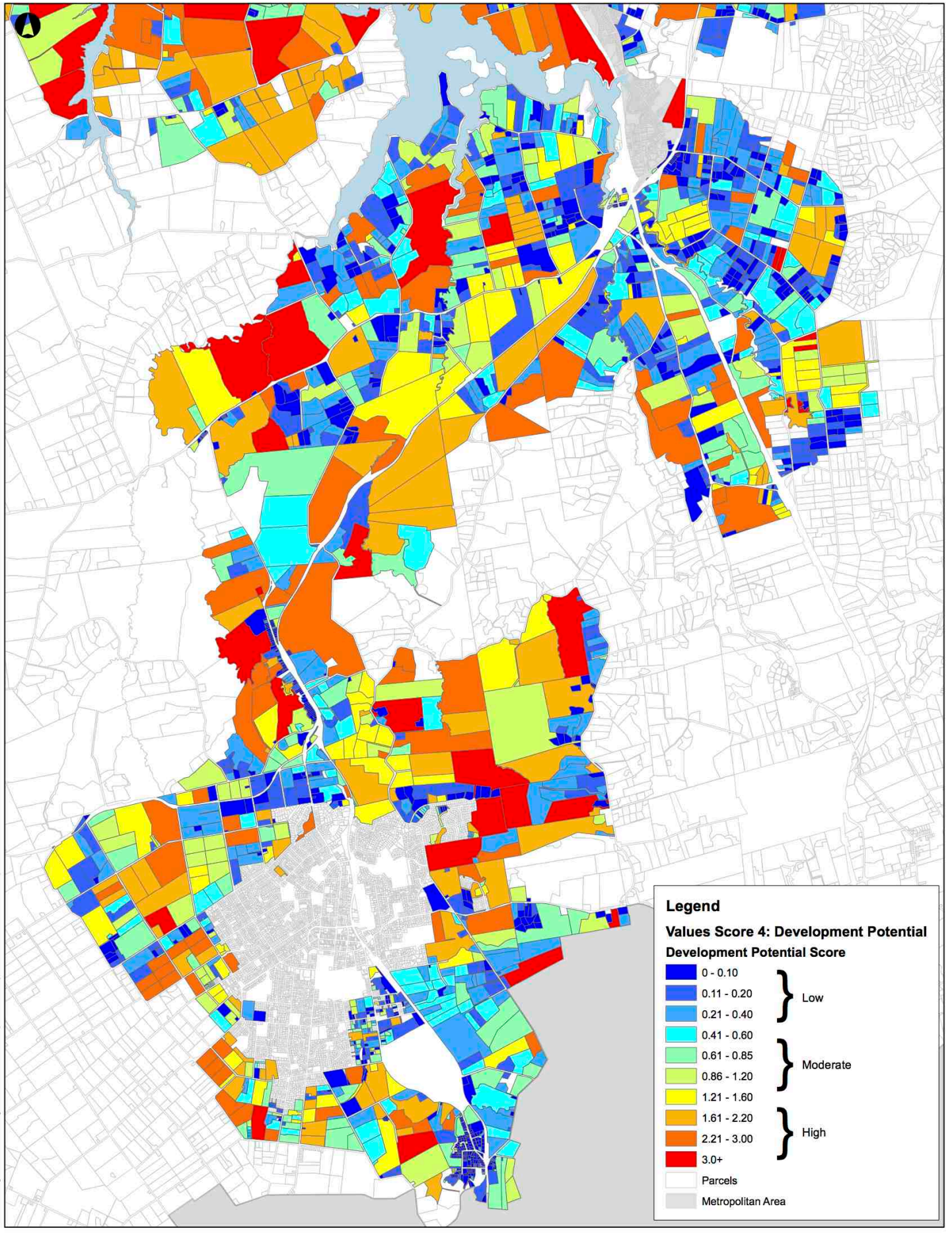


Kyle Ballerston 11-6-2015 U:\CPO\AS\Research Investigations and Monitoring\Land Use Research\EGA (Patrick Fomin)\Greenfields June 2013\Final Maps IVCV Values 11-06-13 Port.mxd

"Project Unlock" 4: Overall Development Potential Score
 Extent: Karaka to Flat Bush



Produced by Research, Investigations & Monitoring



"Project Unlock" **4: Overall Development Potential Score**
Extent: Pukekohe to Drury

